



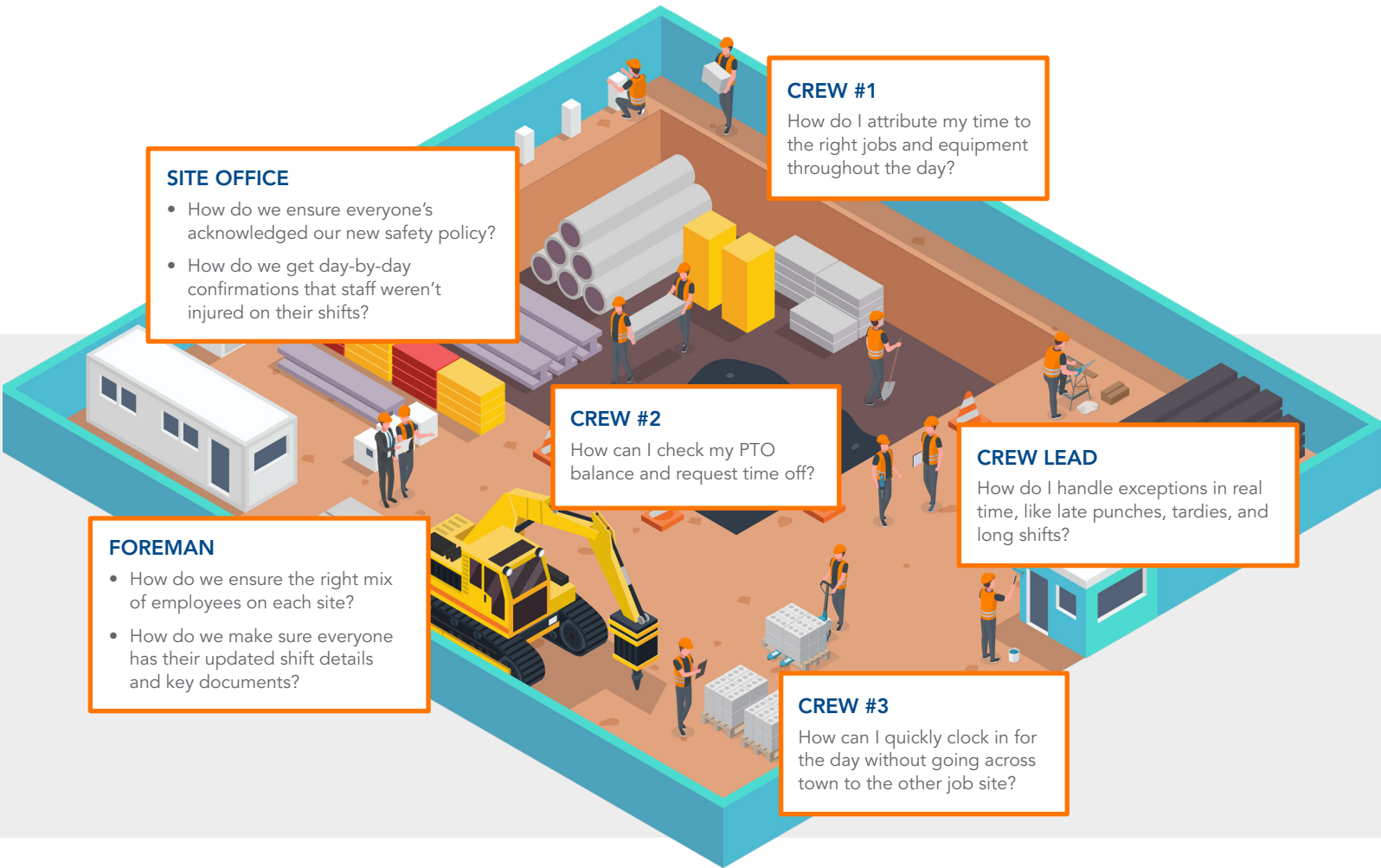
Construction

Workforce decisions can make or break a project budget, but disjointed job costing, a remote workforce, and labor laws and union rules can make it hard to get time right. TCP automates construction time tracking and employee scheduling, so you can manage labor, profitability, and business efficiency across multiple sites.



Southeast construction site

Example time, attendance, and employee scheduling struggles



Key needs across your corporate team



Chief operations officer

- How do we stay compliant with union rules and labor laws?
- How do we boost productivity and keep projects on track?



Business manager

How can we improve business outcomes, stay on budget, and exceed profit KPIs?



Payroll director

- How can I quickly and accurately process payroll?
- How can I accurately send hours to our payroll system?



HR director

How can my team get better visibility into employee events that fall under policies like FMLA?



Southeast construction site

with TCP's automated time, attendance, and employee scheduling

SITE OFFICE

Track employees' acknowledgment of new policies and ask them questions when they clock out using our configurable clocks.

FOREMAN

- Reduce time spent on employee scheduling by up to 75% and auto-fill optimized schedules to ensure the right mix of crew for each site.¹
- Remove bottlenecks and keep the crew connected with automated communications and attached shift files.

CREW #2

Empower employees with self-service access to schedules, hours worked, accruals, and leave requests.



CREW #1

Drive accurate billing and reporting by enabling crew to easily switch between cost codes via mobile or physical clocks.

CREW LEAD

Address tardies, missed punches, and missed meal breaks in real time with automated exceptions notifications.

CREW #3

Get accurate timekeeping from anywhere by mixing and matching our flexible, easy-to-use time collection options—including kiosks and mobile with geofencing/geolocation.

Meet key needs across your corporate team



Chief operations officer

- Adhere to labor laws and union agreements with our rules engines for overtime, fatigue rules, meal breaks, and more.
- Keep productivity high and projects on budget with configured labor standards and reporting.



Business manager

Keep labor costs in check and reallocate labor when needed with real-time analytics on jobs, productivity, overtime, and more.



Payroll director

Improve payroll accuracy by up to 99% and reduce effort by up to 85% by integrating with your payroll system and automating payroll calculations—including shift differentials, overtime, and different pay rates by position.²



HR director

Improve efficiencies and ensure error-free and timely processing with our built-in FMLA module.

References: 1. TCP client data. 2022.; 2. TCP client data. 2021.



Want to learn more? Let's talk.

800.749.8463 | www.tcpsoftware.com

Get time right, every time

© 2024 TimeClock Plus, LLC (TCP Software). All rights reserved.