



# Government and public safety

How do you meet every department's time, attendance, and employee scheduling needs while maintaining standardized, efficient business processes? TCP automates time tracking and employee scheduling, so you can serve each department while offering employees ease and efficiency, keeping budgets on track, and minimizing compliance exposure.



## City of Springville

Example needs across departments

### LAW ENFORCEMENT

Someone just called off—we need an available and qualified officer asap.

### EMERGENCY SERVICES

We need 24/7 schedules that match our unique rotational patterns.

### PUBLIC/BEHAVIORAL HEALTH

We need to be able to access our schedules anywhere and easily trade shifts.

### PARKS & RECREATION

We need to know how many lifeguards, rec center workers, and fitness class instructors to staff.

### CITY HALL

We need modernized processes for leave and accrual management that comply with union rules.

### LIBRARIES & MUSEUMS

We need to easily share the updated work schedule with employees and volunteers.

### PUBLIC WORKS

We need to track labor against different grant budgets.

### YOUTH, FAMILY, JOBS SERVICES

We need to get away from paper/pencil timesheets to ensure accurate time tracking.

### LANDFILL & SEWAGE

Our workers don't have access to a computer or smart phone and need a rugged clocking station to clock in and out of various jobs.

## Key needs across stakeholders



### Payroll director

How can I quickly and accurately calculate payroll across each department's rules and send hours to our payroll system?



### Chief HR officer

How can we support compliance and improve visibility into employee events under FMLA?



### Chief financial officer/ treasurer

How can we stay on budget and increase transparency?



### Chief technology officer

How can we securely integrate with our ERP/HCM?



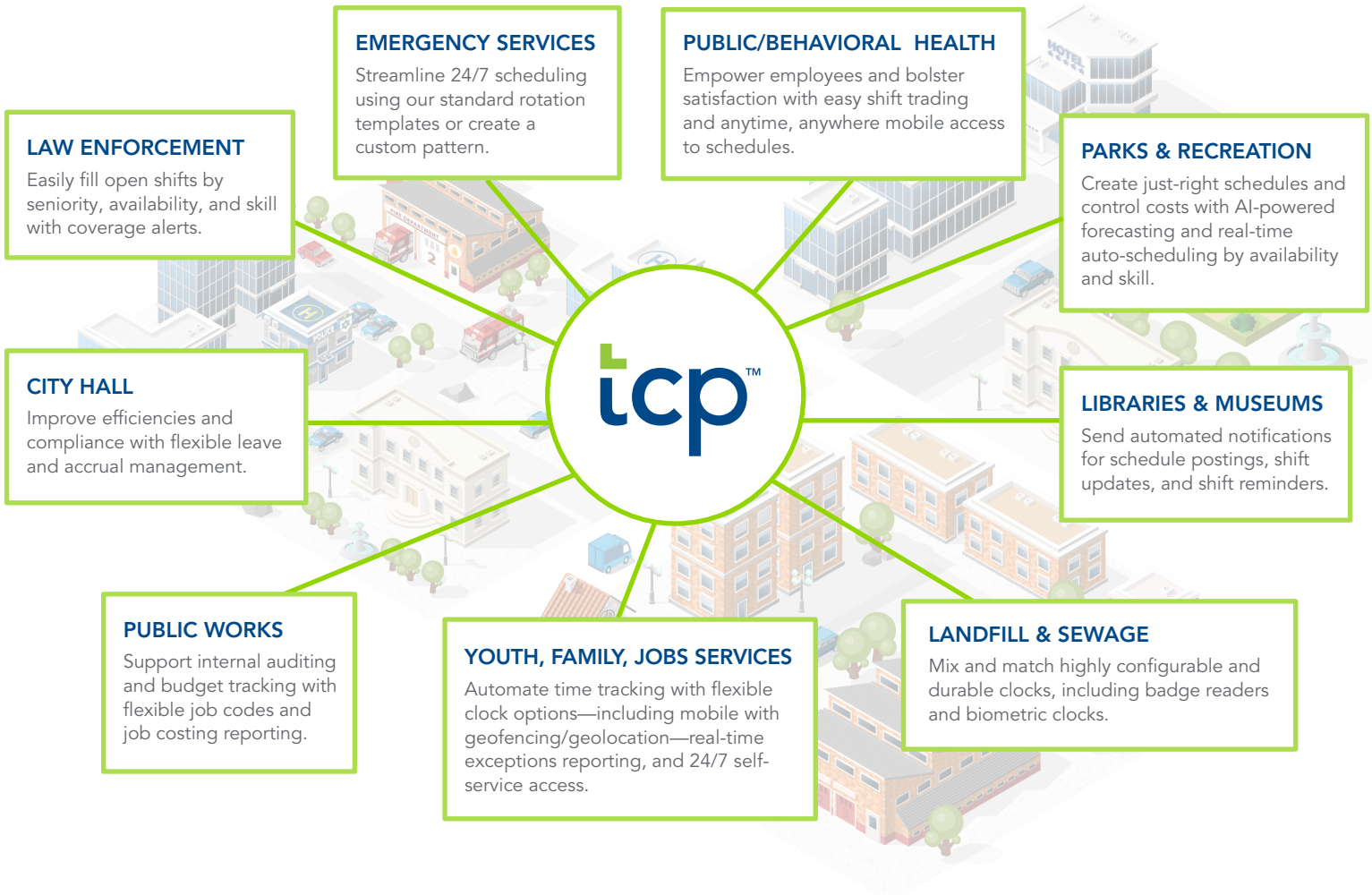
### Public safety command

How do I know I have the right staff in the right place at the right time?



# City of Springville

with TCP's automated time, attendance, and employee scheduling



## Key needs across stakeholders



### Payroll director

Accurately calculate payroll across each department's differing overtimes, shift differentials, and pay rates and integrate with your payroll provider.



### Chief HR officer

Improve compliance and unlock error-free FMLA processing with our configurable compliance rules engines and built-in FMLA module.



### Chief financial officer/ treasurer

Control costs by improving payroll accuracy, eliminating unneeded overtime, and preventing time theft.



### Chief technology officer

Avoid resource waste and ineffective manual processes by integrating with your ERP/HCM system.



### Public safety command

Modernize scheduling and ensure proper coverage with real-time 24/7 rotation scheduling for public safety.



## Want to learn more? Let's talk.

800.749.8463 | [www.tcpsoftware.com](http://www.tcpsoftware.com)

## Get time right, every time

© 2023 TimeClock Plus, LLC (TCP Software). All rights reserved.